





5) Compatible Time Clocks

E.Time software works with all ELID time clocks such as the ET1200 series, ET630, ET3100 and ET3000.

 <p>ET1200 is designed to be able to work with all card technologies of common similarities like Bar-code, Magnetic and Proximity. It is housed in a sturdy metal casing and is highly suitable for factory environment.</p>	 <p>ET3100 is a user-friendly and cost-effective optical-based fingerprint time clock for registration and verification of employees.</p>
 <p>ET630 is an elegant and compact time clock whose design blends in well in an office environment. It comes with a built-in proximity reader.</p>	 <p>ET3000 is a state-of-the-art silicon-based fingerprint time clock with built-in EM/HID/Mifare reader.</p>

6) Flexible Data Migration

E.Time provides flexible data migration tools for data processing.

Data Export

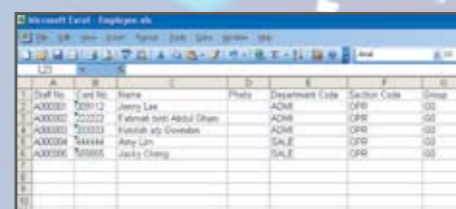
Users can export the attendance record, employee information and clocking data into text/Excel format which can be used for integration with third party payroll software to generate salary.

Data Import

Users can import employee information and clock data in text file (.txt) or Excel file (.xls) to E.Time database.

Migration Tool

Migration Tool is designed for the existing users of EasyTime who wishes to upgrade the time attendance software from EasyTime to E.Time.



7) Online Monitoring

E.Time can immediately display transactions that are received from the ELID Time Clock.

8) User-definable

Software can be personalized under company name and logo. This function also supports user definable staff databases and user photo images.

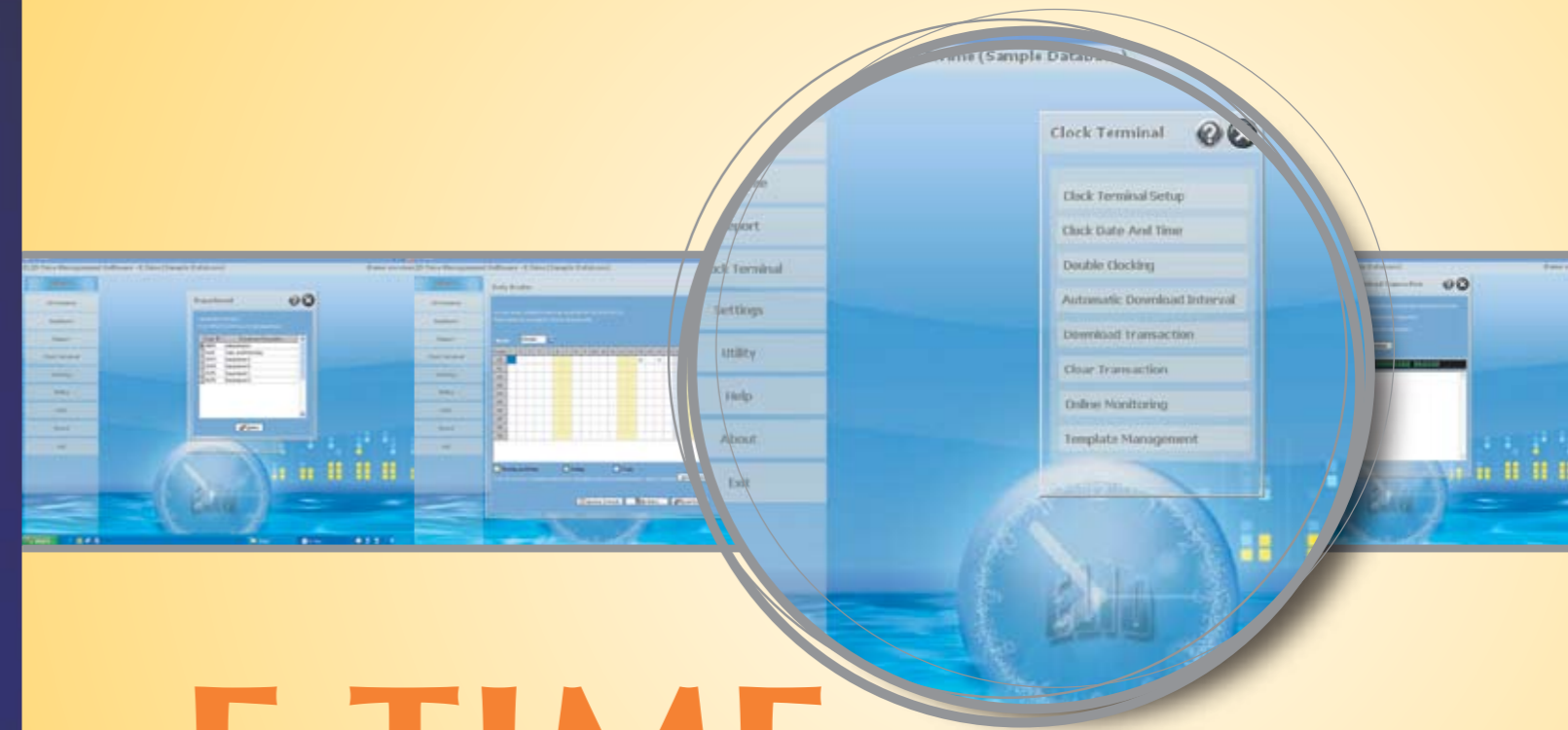
SYSTEM REQUIREMENTS

Computer:	Pentium IV or higher
Operation System:	Microsoft Windows 2000/XP or higher
RAM: Minimum	128MB
Hard Disk Space:	30MB (Installation), 100MB (Operation)
Display:	Super VGA Monitor with 1 M SVGA interface board
Communication Interface:	One RS232 serial port (com 1 or com 2)
Display:	800 x 600 or better.



For more information: check out the website at: www.elid.com, or contact our dealers. ELID has a policy of continuous research and development, and reserves the right to change specifications without notice.

www.elid.com



E.TIME

Time Attendance Management System

The friendly system that goes without saying.....

WE MAKE YOUR WORLD SECURE

E.Time - Time Attendance Management System

E.Time is a Windows based Time Attendance Management software, designed to monitor staff attendance effectively. It is suitable for use in a factory environment to track shift functions accurately.

E.Time works with all ELID Time Clocks and allow clock data from each time clock to be uploaded into the PC, where they can be processed and generated into various reports of employees' attendance status. These reports can also be exported for use by third party payroll software to generate overtime pay.

FEATURES

1) Comprehensive Reports

E.Time provides comprehensive reports of employees' attendance status. This becomes handy for monitoring and tracking purposes. Reports can be generated by selection - eg by Department, Date or Employee ID.

(i) Summarized Reports

- Attendance Summary (by Employee)
- Daily Attendance Analysis (by Day)
- Monthly Attendance Analysis (by Month)

(ii) Detailed Reports

- Daily Attendance Details
- Attendance Details (by Employee)
- Overtime Report
- Lateness Report
- Early-Out Report
- Incomplete Report
- Absenteeism Report
- Edited Attendance Report
- Attendance Sheet

(iii) Others

- Leave Report
- Duty Calendar
- Department List
- Section List
- Employee List
- Holiday List

2) Multiple-shift Scheduling

E.Time has the ability to provide multiple-shift scheduling that helps divide employees into different working schedules. Users can configure up to 26 working schedules with a different working in/out time, meal in/out time and OT start/end time at E.Time. Same group of employees who works on the same schedule (shift) can be grouped together.

3) User Friendliness

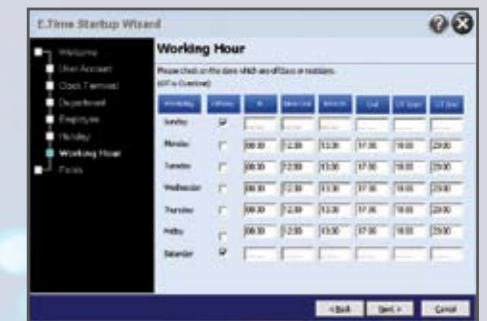
E.Time is a user-friendly time attendance management software in both settings and operations.

Ease of Setup

A startup wizard emerges when E.Time is installed. It will lead the user to complete basic configurations like clock terminal setup, department setting, user ID enrolment, holiday setting and work schedule.

User-friendly Interface

E.Time displays an organizational tree with a clear view of the attendance of employees. User-friendly interface saves time in navigating through the functions of E.Time.



4) Flexible Configuration

E.Time is able to monitor the transactions from the total of 16 ELID time clocks. The PC is connected to the time clocks via a communicator (EL70D) or terminal server (EL78).

